

# Wi-Fi AC1200 Dual-band Outdoor CPE

## AirDual-AC12

airlive®



Qualcomm  
QCA9653

Dual Band  
AC1200

14dbi  
Built-in antenna

PTP/PTMP

AP/Repeater  
Mode

Cloud  
Control

Multiple  
8x SSID

2 x  
Giga  
WAN/LAN

48V  
PoE  
802.at

IP-65  
Water-Proof

## Overview

### High Performance Dual Band Outdoor AP/Repeater CPE

AirDual-AC12 is a high performance 1200Mbps Outdoor AP/Repeater/CPE built to the highest standard. It features dual polarity MIMO antenna to ensure optimal reception. 48V IEEE 802.at PoE is featured to allow long cabling distance.

### Professional Outdoor design+ Internal Lightning Protection, Suitable for multiple harsh environment

Adopt outdoor ABS Plastic shell and professional lightning protection components, provide IP65 water-proof, dust-proof, suitable for multiple harsh environment. Even in extreme hot and cold environment(-40°C ~ + 55°C), also can work stable.



## Features

- 802.11 a/b/g/n/ac Wave 2 compliant
- IP 65 Enclosure
- Built-in 15 dbi Antenna
- Cloud Control in AP mode
- 2.4/5Ghz AC 1200mbps
- 1 x 10/100/1000mbps WAN
- 1 x 10/100/1000mbps LAN
- 48V IEEE 802.3at PoE power input (WAN)

### 5GHz frequency, more channels, lower latency, higher stability

AirDual-AC12 with full 5GHz frequency of 5020~6100MHz, more than 200 channels available, it avoids the frequency interference problem, High data transmission with fast speed, low delay and high stability great for locations that require this.



# Wi-Fi AC1200 Dual-band Outdoor CPE

## AirDual-AC12

airlive®

### ABS weather-proof case

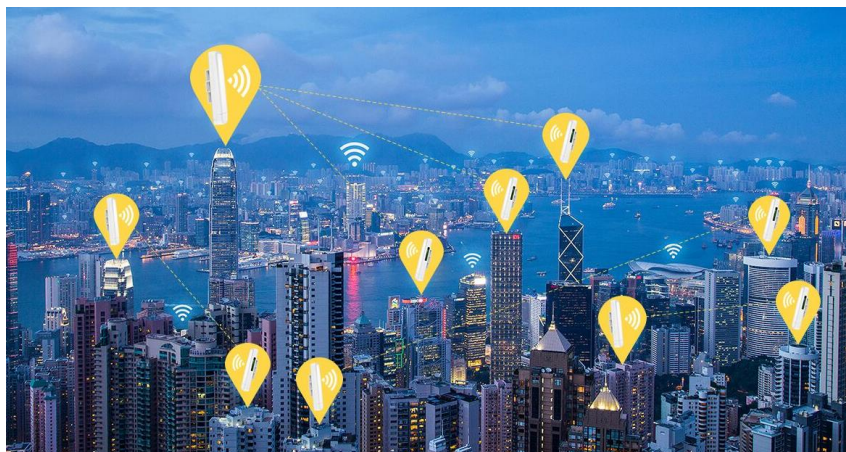
AirDual-AC12 with ABS waterproof, dust proof and sunscreen shell, avoid the damage from dust, rainy weather. Meantime, it adaptive to various environment, the working temperature can be at -40°C to 55°C. Suitable for many country.



### Advanced AP/ Repeater PTP, PTMP Mode or Cloud Management

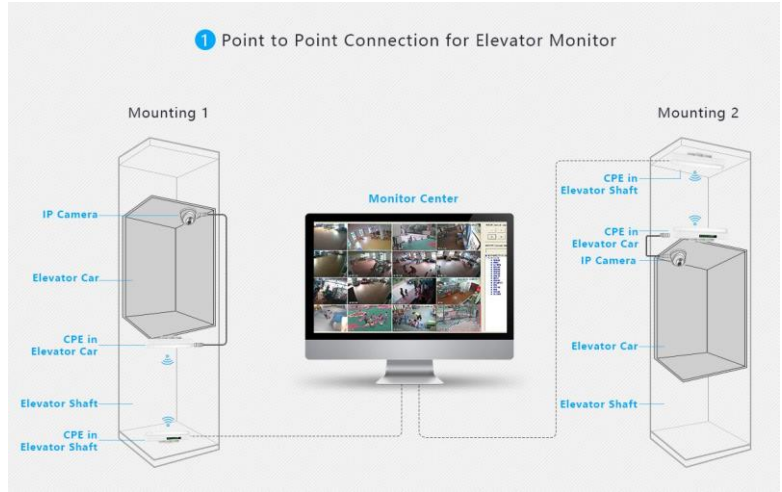
**AP and Repeater Mode:** In this mode the AirLive AirDual AC12 works as an AP or Repeater, Which allows the installer to setup the Point to point or point to multiple point wireless application. Built a network connection over a longer distance between two buildings or cover a larger open area with several units in multipoint function.

**Cloud Control:** The AirLive AirDual AC12 can be controlled via the Cloud (ONLY in AP Mode), ones the AP has been added to the Cloud. It can be controlled from any location. This offers extra benefits when dealing with a large network of Access Points, as direct access is not needed, and support can be giving from a remote office. Also, multiple levels of control can be giving in the Cloud from Admin to only viewer rights. AP's can be added and removed at anytime.



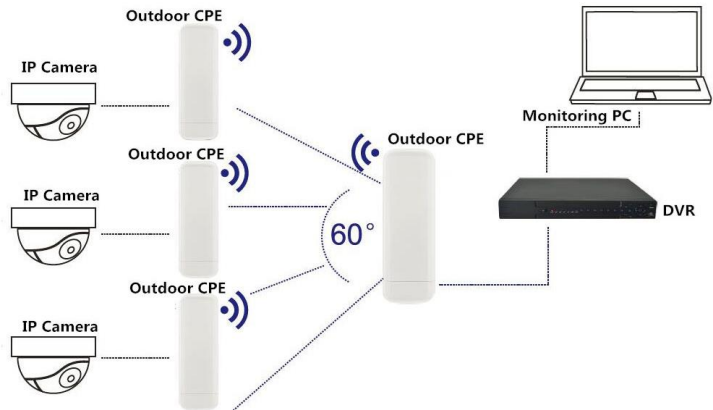
### Multiple Application Environment

#### 1. Elevator Monitor



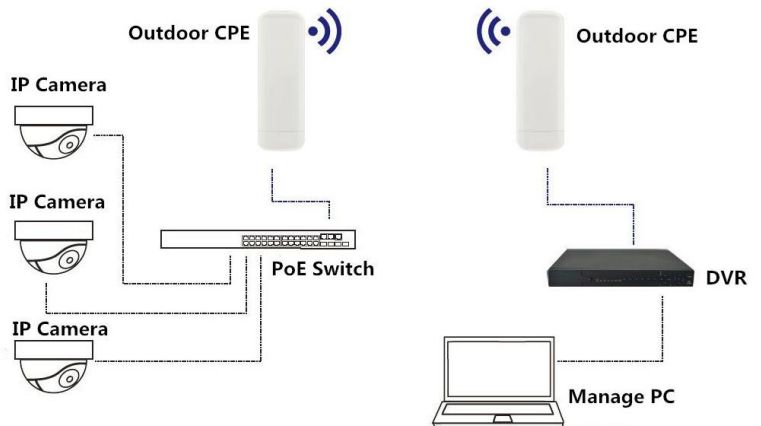
#### 2. Point To Multiple Point connection application

PTMP Working Diagram of Outdoor CPE work with IP Camera



#### 3. Point To Point connection application

PTP Working Diagram of Outdoor CPE work with Multiple IP Camera



Model	AirDual-AC12
<p><b>Device Interface</b></p> <ul style="list-style-type: none"><li>• <b>Main Chip:</b> Qualcomm QCA9563</li><li>• <b>Flash:</b>16MB</li><li>• <b>RAM:</b>128MB</li><li>• <b>Standard:</b> IEEE802.11ac, IEEE802.3, IEEE 802.11n, IEEE 802.11a ,802.11b, 802.3at, 802.3az</li><li>• <b>Frequency:</b> 5.020GHz-6.100GHz/2.312GHz to 2.4835GHz</li><li>• <b>Channel:</b>CH36 ~CH165/CH1-13 (Country depended)</li><li>• <b>Modulation:</b> OFDM = BPSK, QPSK,16-QAM,64-QAM; DSSS = DBPSK, DQPSK, CCK</li><li>• <b>Data Rate:</b> 1200Mbps (2.4Ghz 300Mbps, 5.8Ghz 900Mbps)</li><li>• <b>RF Output Power:</b> ≤ 22+2dBm (500mW)</li><li>• <b>Antenna:</b> 2.4GHz: 12dBi Panel Antenna\5GHz: 14dBi Panel Antenna</li><li>• <b>WAN:</b> 1 * 10/100/1000Mbps RJ-45 WAN Port, support IEEE 802.3af 48V PoE in</li><li>• <b>LAN:</b> 1 * 10/100/1000Mbps RJ-45 LAN Port</li><li>• <b>Reset Button:</b>1 * Reset Button, Press 10 seconds, the device will revert to factory default settings.</li><li>• <b>LED Light:</b> SYS, Wi-Fi, WAN, LAN, Signal Strength</li><li>• <b>Power Consumption:</b> &lt;30W</li><li>• <b>Water-proof Level:</b> IP65</li></ul> <p><b>Firmware Function</b></p> <p><b>Control</b></p> <ul style="list-style-type: none"><li>• Operation Mode: Wireless AP, Gateway, WiFi Repeater</li><li>• Dynamic IP/Static IP/PPPoE/L2TP(Dual Access) /PPTP(Dual Access)</li></ul> <p><b>Wireless</b></p> <ul style="list-style-type: none"><li>• SSID broadcast, SSID hide</li><li>• Multiple SSID up to 8</li><li>• Firewall: DoS, SPI Firewall, IP, MAC, URL filter, IP and MAC Address Binding</li><li>• WiFi timed on/off</li><li>• Multicast acceleration</li><li>• VPN pass through</li><li>• DDNS, Port Forwarding, DMZ Host</li><li>• Security: OPEN, WPA, WPA2, WPA-PSK, WPA2-PSK, 802.1x encryption</li><li>• Support RF power adjustable based on environment</li><li>• Max Users: 128</li></ul>	<p><b>Network Function</b></p> <ul style="list-style-type: none"><li>• Tag VLAN setting based on SSID</li><li>• DHCP server</li></ul> <p><b>Device Management</b></p> <ul style="list-style-type: none"><li>• Backup the configuration information</li><li>• Restore the configuration information</li><li>• Reset to factory default settings</li><li>• Device reboot: reboot immediately or timed reboot</li><li>• Firmware upgrade</li><li>• Time management: including system time and time synchronization</li><li>• System log</li><li>• Support WEB GUI management</li><li>• Support Cloud remote management (AP Mode)</li></ul> <p><b>Multiple Language</b></p> <ul style="list-style-type: none"><li>• English</li></ul> <p><b>ESD Protection</b></p> <ul style="list-style-type: none"><li>• ESD: Air discharge: ±8KV, Contact discharge: ±4KV</li></ul> <p><b>Environment</b></p> <ul style="list-style-type: none"><li>• Operating temperature: -30°C ~ +55°C</li><li>• Storage Temperature: -40°C ~ +70°C</li><li>• Operating Humidity: 10% ~ 90% (non-condensing)</li><li>• Storage Humidity: 5% ~ 90% (non-condensing)</li><li>• Enclosure: IP65</li></ul> <p><b>Standard package of switch</b></p> <ul style="list-style-type: none"><li>• <b>Product size:</b> 31.5cm x 14.5cm x 8cm (L*W*H)</li><li>• <b>Package size:</b> TBD cm(L*W*H)</li><li>• <b>Package content:</b> TBD 1 x AirDual-AC12, PoE Injector, Install Accessory, LAN Cable, User Manual</li></ul> <p><b>Ordering information</b></p> <ul style="list-style-type: none"><li>• <b>AirLive AirDual-AC12</b> Wi-Fi AC1200 Gigabit Outdoor CPE</li></ul>

