

Wi-Fi 6 AX3000 Dual-band Outdoor AP Omni

AWOD-30AXi

airlive®



Qualcomm
IPQ5018

Dual Band
AX3000

8dbi
Built-in Omni
Antenna

AP/Repeater
Mode

Cloud
Control

Multiple
8x SSID

1 x 1G WAN
1x Console

48V PoE
802.af

IP-67
Water-Proof

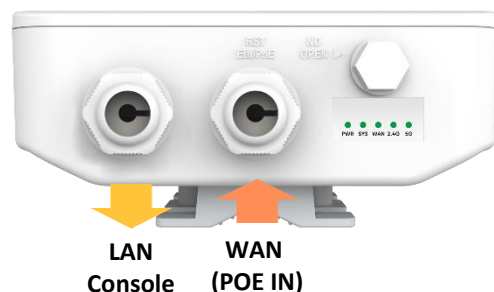
Overview

High Performance Dual Band Outdoor AP/Repeater with Omni Antenna.

AWOD-30AXi is a high performance 3000Mbps Outdoor AP/Repeater built to the highest standard. It features an 8dBi Omni MU-MIMO antenna to ensure optimal reception. 48V IEEE 802.at PoE is featured to allow long cabling distance. It also supports Seamless Roaming.

Professional Outdoor design+ Internal Lightning Protection, Suitable for multiple harsh environment

Adopt outdoor ABS Plastic shell and professional lightning protection components, provide IP67 water-proof, dust-proof, suitable for multiple harsh environment. Even in extreme hot and cold environment (-30°C ~ +70°C), also can work stable.



Features

- 802.11 a/b/g/n/ac/ax compliant
- IP 67 Enclosure
- Built-in 8dBi Omni Antenna
- Cloud Control in AP mode
- 2.4/5Ghz AC 3000Mbps
- 1 x 10/100/1000Mbps WAN
- 1 x 10/100/1000Mbps Console Port
- 48V IEEE 802.3af PoE power input (WAN)

5GHz frequency, more channels, lower latency, higher stability

AWOD-30AXi with full 5Ghz frequency of 5150~5850MHz, more than 200 channels available, it avoids the frequency interference problem, High data transmission with fast speed, low delay and high stability great for locations that require this.

Omni Antenna long range.

The AWOD-30AXi has a coverage area of around 100meter. Depending on the environment.

Cover a larger area with your Wi-Fi signal.



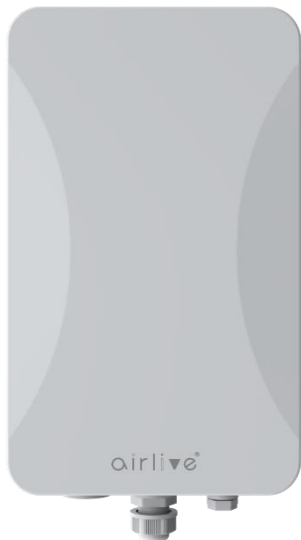
Wi-Fi 6 AX3000 Dual-band Outdoor AP Omni

AWOD-30AXi

airlive®

ABS weather-proof case

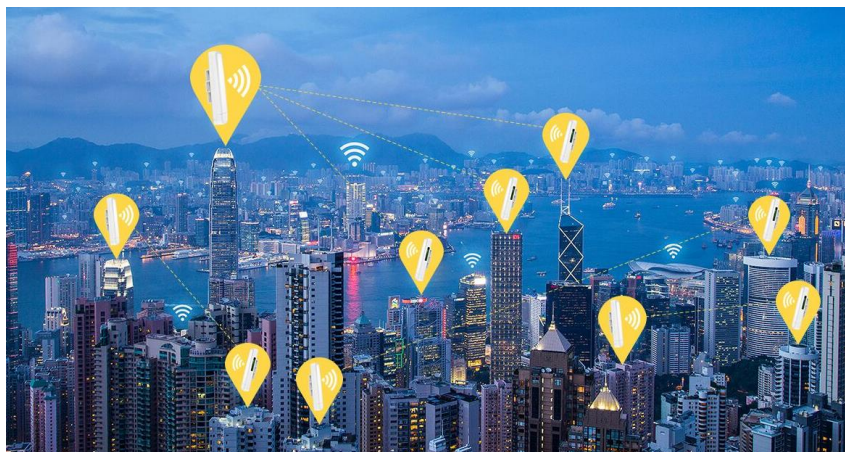
AWOD-30AXi with ABS waterproof, dust proof and sunscreen shell, avoid the damage from dust, rainy weather. Meantime, it adaptive to various environment, the working temperature can be at -30°C to 70°C. Suitable for many country.



Advanced AP/ Repeater PTP, PTMP Mode or Cloud Management

AP and Repeater mode: In this mode the AirLive AWOD-30AXi works as an AP or Repeater, Which allows the installer to setup a network which covers an area of around 100m (depending on environment). Or built a network connection over a longer distance between several buildings or cover a larger open area with multiple units in repeater mode.

Cloud Control: The AirLive AWOD-30AXi can be controlled via the Cloud (ONLY in AP Mode), ones the AP has been added to the Cloud. It can be controlled from any location. This offers extra benefits when dealing with a large network of Access Points, as direct access is not needed, and support can be giving from a remote office. Also, multiple levels of control can be giving in the Cloud from Admin to only viewer rights. AP's can be added and removed at anytime



Model	AWOD-30AXi
<p>Device Interface</p> <ul style="list-style-type: none"> • Main Chip: Qualcomm IPQ5018 • Flash: NOR 8MB + NAND 128MB • RAM:512MB • Standard: IEEE802.11ax, IEEE802.11ac, IEEE802.3, IEEE 802.11n, IEEE 802.11a ,802.11b, 802.3at, 802.3az • Frequency: 5.150GHz~5850GHz/2.4GHz~2.484GHz • Channel: CH36 ~CH165/CH1-13 (Country depended) • Modulation: DL/UL-OFDMA modulation, Seamless Roaming • Data Rate: 3000Mbps (2.4Ghz 600Mbps, 5.8Ghz 2400Mbps) • RF Output Power: ≤ 27+2dBm (500mW) • Antenna: 8dBi Omni Antenna • WAN: 1 * 10/100/1000Mbps RJ-45 WAN Port, support IEEE 802.3af 48V PoE in • LAN Console: 1 * 10/100/1000Mbps RJ-45 Console Port • Reset Button: 1 * Reset Button, Press 10 seconds, the device will revert to factory default settings. • LED Light: SYS, WAN, 2.4G, 5.8G • Power Consumption: <24W • Water-proof Level: IP67 <p>Firmware Function</p> <p>Control</p> <ul style="list-style-type: none"> • Operation Mode: Wireless AP, Gateway, Wi-Fi Repeater • Dynamic IP/Static IP/PPPoE/L2TP(Dual Access) /PPTP(Dual Access) <p>Wireless</p> <ul style="list-style-type: none"> • SSID broadcast, SSID hide • Multiple SSID up to 8 • Firewall: DoS, SPI Firewall, IP, MAC, URL filter, IP and MAC Address Binding • Wi-Fi timed on/off • Multicast acceleration • VPN pass through • DDNS, Port Forwarding, DMZ Host • Security: OPEN, WPA, WPA2, WPA-PSK, WPA2-PSK, WPA3 • Support RF power adjustable based on environment • Max Users: 160 	<p>Network Function</p> <ul style="list-style-type: none"> • Tag VLAN setting based on SSID • DHCP server <p>FIT/FAT Operation Mode</p> <ul style="list-style-type: none"> • FIT Mode: AP works with AC Controller/Cloud (Enterprise) • FAT Mode: AP works standalone (Home use) <p>Device Management</p> <ul style="list-style-type: none"> • Backup the configuration information • Restore the configuration information • Reset to factory default settings • Device reboot: reboot immediately or timed reboot • Firmware upgrade • Time management: including system time and time synchronization • System log • Support WEB GUI management • Support Cloud remote management (AP Mode) <p>Multiple Language</p> <ul style="list-style-type: none"> • English <p>ESD Protection</p> <ul style="list-style-type: none"> • ESD: Air discharge: ±8KV, Contact discharge: ±4KV <p>Environment</p> <ul style="list-style-type: none"> • Operating temperature: -30°C ~ +70°C • Storage Temperature: -40°C ~ +70°C • Storage Humidity: 5% ~ 95% (non-condensing) • Enclosure: IP67 <p>Standard package of Outdoor AP</p> <ul style="list-style-type: none"> • Product size: 30.30 x 18.05 x 8.70 cm (L*W*H) • Package size: 38.20 x 23.00 x 10.60 cm(L*W*H) • Package Weight: N.W: 1.280kg; G.W: 1.720kg • Package content: TBD 1 x AWOD-30AXi, Install Accessory, QIG <p>Standard carton package</p> <ul style="list-style-type: none"> • Quantity: 10pcs / 1 carton • Dimensions 55.5 x 40.0 x 48.3cm (L*W*H) • Weight 18kg (G.W) <p>Ordering information</p> <ul style="list-style-type: none"> • AirLive AWOD-30AXi Wi-Fi 6 AX3000 Gigabit Outdoor AP

AirLive