

Wi-Fi 6 AX3000 Dual-band Outdoor AP Omni

With 1x 2.5G WAN Port PoE In, 1x 1G LAN port

AWOD-30AXi-2.5GE

airlive®



Qualcomm IPQ5018	Dual Band AX3000	6dbi Built-in Omni Antenna	AP/Repeater Mode
Cloud Control	Multiple 8x SSID	1x 2.5G WAN 1x 1G LAN	48V PoE 802.af IP67 Water-Proof

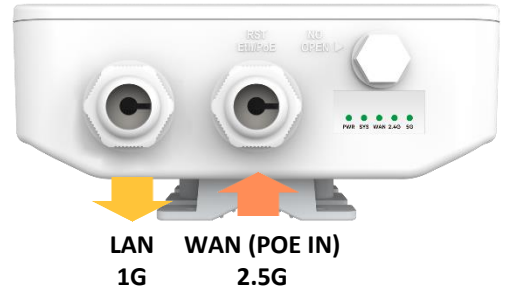
Overview

High Performance Dual Band Outdoor AP/Repeater with Omni Antenna.

AWOD-30AXi-2.5GE is a high performance 3000Mbps Outdoor AP/Repeater built to the highest standard. It features an 6dBi Omni MU-MIMO antenna to ensure optimal reception. It has a 2.5G WAN port which supports 48V IEEE 802.at PoE which allow long cabling distance. The LAN port is 1 Gigabit, The AWOD-30AXi-2.5GE also supports Seamless Roaming.

Professional Outdoor design+ Internal Lightning Protection, Suitable for multiple harsh environment

Adopt outdoor ABS Plastic shell and professional lightning protection components, provide IP67 water-proof, dust-proof, suitable for multiple harsh environment. Even in extreme hot and cold environment (-30°C ~ +55°C), also can work stable.



Features

- 802.11 a/b/g/n/ac/ax compliant
- IP67 Enclosure
- Built-in 6dBi Omni Antenna
- Cloud Control in AP mode
- 2.4/5Ghz AC 3000Mbps
- 1 x 10/100/1000/25000Mbps WAN Port
- 1 x 10/100/1000Mbps LAN Port
- 48V IEEE 802.3af PoE power input (WAN)

5GHz frequency, more channels, lower latency, higher stability

AWOD-30AXi-2.5GE with full 5GHz frequency of 5150~5850MHz, more than 200 channels available, it avoids the frequency interference problem, High data transmission with fast speed, low delay and high stability great for locations that require this. The radio frequency uses high-power FEM, which has stable performance and farther coverage.

Omni Antenna long range.

The AWOD-30AXi-2.5GE has a coverage area of around 100meter. Depending on the environment.

Cover a larger area with your Wi-Fi signal.



Wi-Fi 6 AX3000 Dual-band Outdoor AP Omni

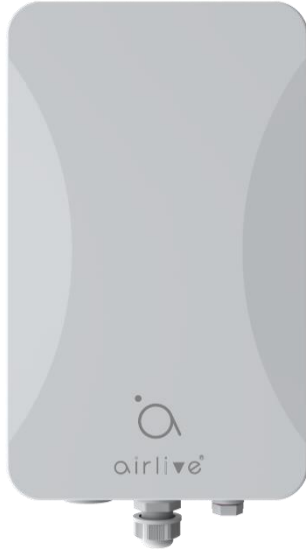
With 1x 2.5G WAN Port PoE In, 1x 1G LAN port

AWOD-30AXi-2.5GE

airlive®

ABS weather-proof case

AWOD-30AXi-2.5GE with ABS waterproof, dust proof and sunscreen shell, avoid the damage from dust, rainy weather. Meantime, it adaptive to various environment, the working temperature can be at -30°C to 55°C. Suitable for many country.

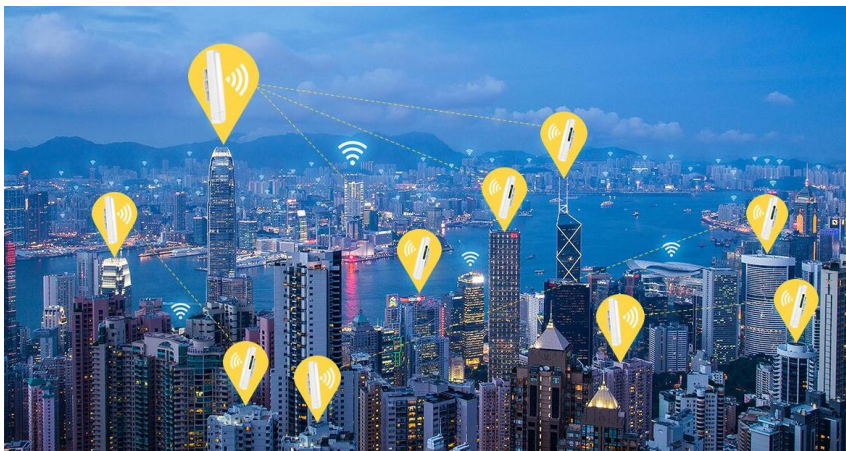


Advanced AP/Gateway/Repeater PTP, PTMP Mode or Cloud Management

AP and Repeater mode: In this mode the AirLive AWOD-30AXi-2.5GE works as an AP or Repeater, Which allows the installer to setup a network which covers an area of around 100m (depending on environment). Or built a network connection over a longer distance between several buildings or cover a larger open area with multiple units in repeater mode.

Gateway mode: In this mode the AirLive AWOD-30AXi-2.5GE works as a Gateway The device connects to the wide area network through a WAN port and then uses static IP, DHCP, or PPPOE to connect to the internet.

Cloud Control: The AirLive AWOD-30AXi-2.5GE can be controlled via the Cloud (ONLY in AP Mode), ones the AP has been added to the Cloud. It can be controlled from any location. This offers extra benefits when dealing with a large network of Access Points, as direct access is not needed, and support can be giving from a remote office. Also, multiple levels of control can be giving in the Cloud from Admin to only viewer rights. AP's can be added and removed at anytime.



Model	AWOD-30AXi-2.5GE
<p>Device Interface</p> <ul style="list-style-type: none">• Main Chip: Qualcomm IPQ5018• Flash: NOR 8MB + NAND 128MB• RAM: 512MB• WAN: 1 * 10/100/1000/2500Mbps RJ-45 WAN Port, support IEEE 802.3af 48V PoE in• LAN: 1 * 10/100/1000Mbps RJ-45 LAN Port• Wi-Fi: 802.11b/g/n/ac/ax/ (2.4Ghz), 802.11a/n/ac/ax (5Ghz)• Frequency: 5.150GHz~5825GHz/2.4GHz~2.484GHz• Channel: CH36 ~CH165/CH1-13 (Country depended)• Modulation: DL/UL-OFDMA modulation, Seamless Roaming• Data Rate: 3000Mbps (2.4Ghz 574Mbps, 5.8Ghz 2402Mbps)• RF Output Power: ≤ 26+2dBm (500mW)• Antenna: Internal Wireless Antenna 2x 5dBi (2.4Ghz), 2x 6dBi (5Ghz)• 2.4G EVM: 802.11b: ≤-10dB; 802.11g: ≤-25 dB; 802.11n: ≤-28dB; 802.11ax: ≤-35dB• 5G EVM: 802.11a: ≤-25dB; 802.11n: ≤-28dB; 802.11ac: ≤-32dB; 802.11ax: ≤-35dB• ppm: ±20ppm• Reset Button: 1 * Reset Button, Press 10 seconds, the device will revert to factory default settings.• LED Light: PWR, SYS, WAN, 2.4G, 5.8G• Power Input: 1 x PoE 802.3at• Power Consumption: <19W• Water-proof Level: IP67• Max Concurrent users: 256 <p>Firmware Function</p> <p>Control</p> <ul style="list-style-type: none">• Operation Mode: Wireless AP, Gateway, Wi-Fi Repeater• Static IP/DHCP/PPPoE (Gateway mode) <p>FIT/FAT Operation Mode</p> <ul style="list-style-type: none">• FIT Mode: AP works with AC Controller/Cloud (Enterprise)• FAT Mode: AP works standalone (Home use)	<p>Wireless</p> <ul style="list-style-type: none">• SSID broadcast• Multiple SSID up to 4 per radio• SSID hide• Wi-Fi timed on/off• MAC filter• Security: OPEN, WPA/WPA2PSK-TKIPAES, WPA3PSK-TKIPAES• Band steering (5G Wi-Fi priority)• Wi-Fi time on/off to save energy• User isolation: wireless network isolation, AP internal isolation• Support RF power adjustable based on environment• Wireless client quantity limit• QoS: WMM• Seamless Roaming: 802.11k, 802.11v <p>Device Management</p> <ul style="list-style-type: none">• Backup the configuration information• Restore the configuration information• Reset to factory default settings• Device reboot: reboot immediately or timed reboot• Firmware upgrade• System log• Support WEB GUI management• Support Cloud remote management (AP Mode) <p>Multiple Language</p> <ul style="list-style-type: none">• English <p>Data Statistics</p> <ul style="list-style-type: none">• WAN Down Stream, WAN UP Stream• Wi-Fi Analyzer (2.4, 5Ghz)



Model	AWOD-30AXi-2.5GE
<p>ESD/Surge Protection</p> <ul style="list-style-type: none">• ESD: Air Discharge: $\pm 8\text{KV}$, Contact Discharge: $\pm 6\text{KV}$• Electrical Surge: Common Mode: 2KV, Differential Mode: 2KV <p>Environment</p> <ul style="list-style-type: none">• Operating temperature: $-30^{\circ}\text{C} \sim +55^{\circ}\text{C}$• Storage Temperature: $-40^{\circ}\text{C} \sim +70^{\circ}\text{C}$• Storage Humidity: $5\% \sim 95\%$ (non-condensing)• Enclosure: IP67 <p>Standard package of Outdoor AP</p> <ul style="list-style-type: none">• Product size: 30.30 x 18.05 x 8.70 cm (L*W*H)• Package size: 38.20 x 23.00 x 10.60 cm(L*W*H)• Package Weight: N.W: 1.280kg; G.W: 1.720kg• Package content: 1 x AWOD-30AXi-2.5GE, Install Accessory, QIG <p>Standard carton package</p> <ul style="list-style-type: none">• Quantity: 10pcs / 1 carton• Dimensions 55.5 x 40.0 x 48.3cm (L*W*H)• Weight 18kg (G.W) <p>Ordering information</p> <ul style="list-style-type: none">• AirLive AWOD-30AXi-2.5GE Wi-Fi 6 AX3000 Gigabit Outdoor AP with 1x 2.5G WAN Port and 1x 1G LAN Port	

* Specification will be changed without prior notice

* All trademarks, logos and brand names are the property of their respective owners.

